



Solutions in Air Conditioning

Efficiency, savings, and comfort on every journey

www.cofor.us



Who We Are?

Since 2011, at COFOR we have offered the widest range of autonomous air conditioning systems for truck cabins, designed to maximize energy efficiency and driver comfort.

www.cofor.us



Model: **KM9000RMS**



- ✔ Mounting: Rooftop
- ✔ Voltage: 12V
- ✔ Current: 42-80A
- ✔ Cooling Capacity: 9,500 BTU
- ✔ Evaporator Airflow: 600 m³/h
- ✔ Refrigerant: R134a
- ✔ Refrigerant Charge: 480g ± 10g
- ✔ H/P & L/P - psi: HP: 145-188
- ✔ Cables: 16 (14) mm² / 7.5 m
- ✔ Smart Control Panel: Yes
- ✔ Remote Control: Yes
- ✔ Speeds: 6
- ✔ LED Light: Yes
- ✔ Maximum Cut-Out Size: 75 cm x 50 cm
- ✔ Minimum Cut-Out Size: 62 cm x 36 cm
- ✔ Net Weight: 37 kg
- ✔ Gross Weight: 45 kg
- ✔ External Dimensions (L x W x H): 740 mm x 962 mm x 175 mm
- ✔ Internal Dimensions (L x W x H): 455 mm x 285 mm x 120 mm
- ✔ Warranty: 2 year

\$1,960.00 – \$1,980.00 USD

Model: **EC2400H**



- ✔ Mounting: Wall (Split)
- ✔ Voltage: 12V
- ✔ Current: 42-70A
- ✔ Cooling Capacity: 8,500 BTU
- ✔ Evaporator Airflow: 500 m³/h
- ✔ Refrigerant: R134a
- ✔ Refrigerant Charge: 600g ± 10g
- ✔ H/P & L/P - psi: HP: 145-188
- ✔ Cables: 14 (12) mm² / 3 m
- ✔ Smart Control Panel: Yes
- ✔ Remote Control: Yes
- ✔ Speeds: 5
- ✔ LED Light: Yes
- ✔ Maximum Cut-Out Size: 50 mm diameter
- ✔ Minimum Cut-Out Size: 50 mm diameter
- ✔ Net Weight: 23.5 kg
- ✔ Gross Weight: 27 kg
- ✔ External Dimensions (L x W x H): 505 mm x 200 mm x 370 mm
- ✔ Internal Dimensions (L x W x H): 495 mm x 175 mm x 340 mm
- ✔ Warranty: 2 years

\$1,530.00 – \$1,550.00 USD

Model: **KM1000SP**



- ✓ Mounting: Wall (Split)
- ✓ Voltage: 12V
- ✓ Current: 42–70A
- ✓ Cooling Capacity: 9,500 BTU
- ✓ Evaporator Airflow: 600 m³/h
- ✓ Refrigerant: R134a
- ✓ Refrigerant Charge: 500g ± 10g
- ✓ H/P & L/P - psi: HP: 145–188
- ✓ Cables: 16 (14) mm² / 3.5 m
- ✓ Smart Control Panel: Yes
- ✓ Remote Control: Yes
- ✓ Speeds: 6
- ✓ LED Light: No
- ✓ Maximum Cut-Out Size: 50 mm diameter
- ✓ Minimum Cut-Out Size: 50 mm diameter
- ✓ Net Weight: 24 kg
- ✓ Gross Weight: 28 kg
- ✓ External Dimensions (L x W x H): 809 mm x 462 mm x 209 mm
- ✓ Internal Dimensions (L x W x H): 637 mm x 191 mm x 332 mm
- ✓ Warranty: 2 years

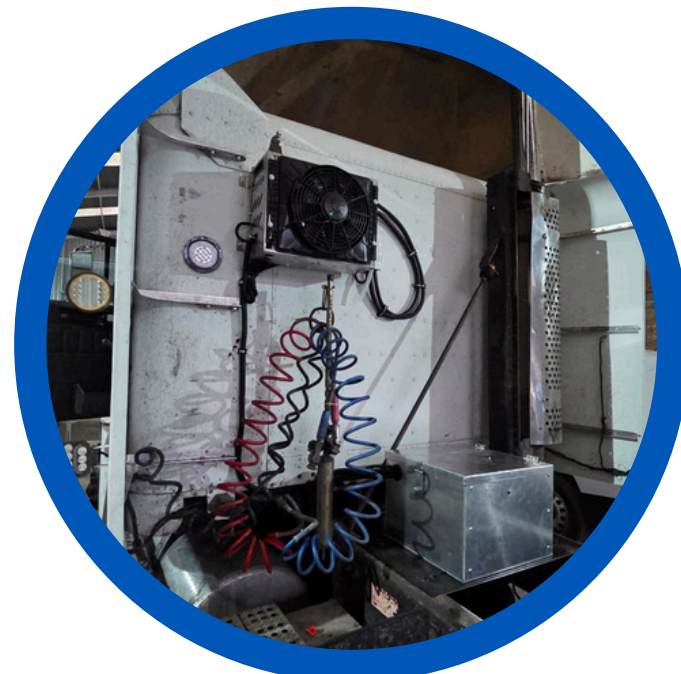
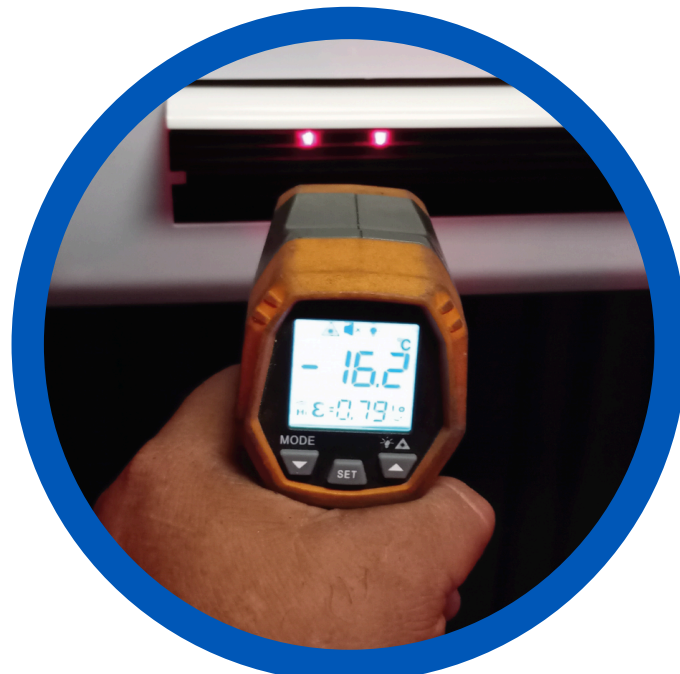
\$1,930.00 – \$1,950.00 USD

Model: **LC-2**



- ✓ Mounting: Cabin interior (indoor unit) + external condenser
- ✓ Voltage: 12V DC
- ✓ Electrical Power: 300–800 W
- ✓ Cooling Capacity: 8,500 BTU/h
- ✓ Rated Current: 50 A
- ✓ Maximum Current: 80 A
- ✓ Refrigerant: R-134a
- ✓ Refrigerant Charge: 600 g ± 30 g
- ✓ Indoor Unit Airflow: 100–350 m³/h
- ✓ Outdoor Unit Airflow: 2,000 m³/h
- ✓ Fan Speeds: 5
- ✓ Digital Control Panel: Yes
- ✓ Remote Control: Yes
- ✓ Low Voltage Protection (default): 10.8 V
- ✓ Voltage Recovery (default): 12 V
- ✓ Refrigeration Oil Type: POE68
- ✓ Standard Pipe Length: 3.5 m
- ✓ Indoor Unit Dimensions (L x W x H): 430 x 140 x 290 mm
- ✓ Outdoor Unit Dimensions (L x W x H): 470 x 280 x 380 mm
- ✓ Warranty: 1 year

\$873.00 USD



Model: D4

- ✔ Compatible with: Gasoline and Diesel
- ✔ Temperature Range: -45°C to +40°C
- ✔ Heating Capacity: 5 kW
- ✔ Rated Voltage: 12V
- ✔ Fuel Consumption: 0.16–0.48 L/h
- ✔ Power Consumption:
 - Start-up: 9–11A
 - Operation: 1–3A
- ✔ Fuel Tank Capacity: 9 L
- ✔ Compatible with a wide range of trucks and commercial vehicles.
- ✔ Premium Quality – 2-Year Warranty

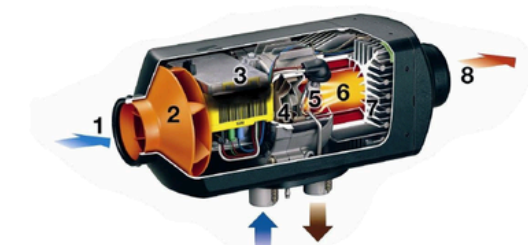
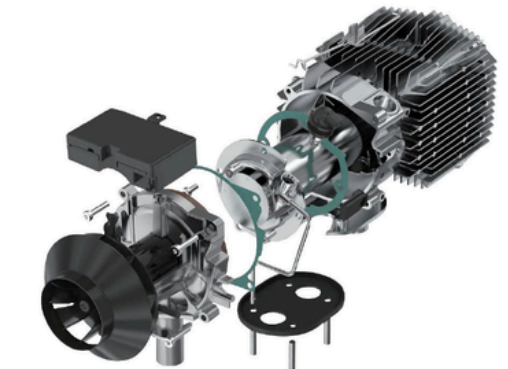
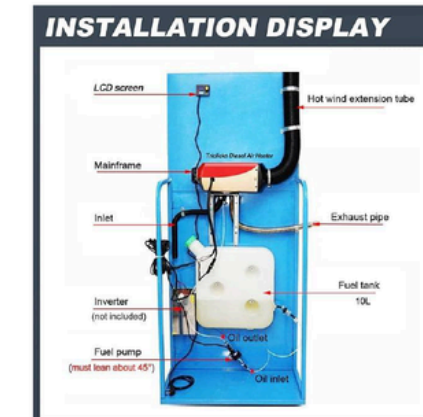
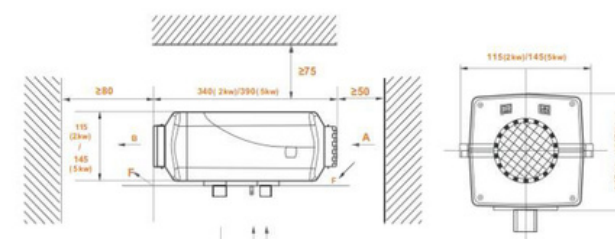
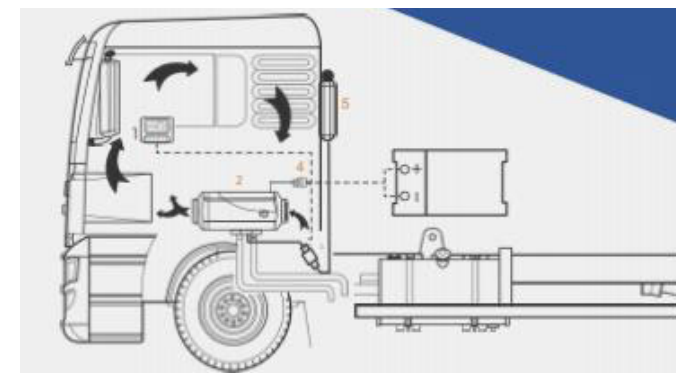
Key Benefits:

- No need to keep the engine running
- Energy efficiency: Operates with low fuel consumption
- Cost savings: Eliminates unnecessary engine usage
- Stable temperature: Optimal performance in extreme climates
- Versatile installation: Adaptable to different types of vehicles

Installation Options:

- Under the seats or in the engine compartment
- Compatible with 12V electrical systems

\$855.00 USD



Fuel Savings (Numerical Impact)

Our systems eliminate the need to keep the engine running to cool the cabin, resulting in significant savings:

- ✓ Fuel savings are proportional to the autonomy or number of idling hours reduced. Considering 6 hours per day as the minimum savings baseline.
- ✓ Our estimates are based on a diesel consumption of **0.92 gallons** per hour while idling, with an average fuel cost of **\$5.68 USD** per gallon, assuming a 6-day work week.

Daily Savings Calculation

6 hrs × 5.55 gal × \$5.68 USD = \$31.5 USD per day
\$756 USD per month (24 working days)

\$756.00 USD / Minimum Monthly Savings



Return on Investment (ROI)



No se considera en este cálculo el ahorro en mantenimiento al motor por el desgaste que se omite en ralentí el cual puede ser de hasta \$170,000 al año

1 hora de ralentí equivale hasta 65 km de recorrido en el motor

- ✓ KM1000SP AIR CONDITIONING SYSTEM
TOTAL = \$1,950 USD + TAX
MONTHLY SAVINGS = \$756 USD
(estimated)
- ✓ Return on investment starting from 6 months



COFOR APU Features:

- Equipment designed for heavy-duty use and high-temperature conditions
- Dual-fan condenser system for enhanced performance
- Humidity control capability
- Operate independently of the truck's engine
- Intelligent battery charge management system
- Easy and minimally invasive installation
- Minimum service life of 10 years guaranteed
- 2-year warranty



Operation



- ✔ Our systems operate on 12V or 24V direct current, depending on the type of truck
- ✔ The alternator supplies power when the engine is running
- ✔ The air conditioning system is powered by the batteries when the engine is off
- ✔ It is recommended to replace the current batteries with AGM batteries
- ✔ An additional battery bank can be installed; in some cases, an alternator and electrical wiring upgrade may be required
- ✔ Our system includes an intelligent charge control system to prevent deep battery discharge



COFORUSA

hello@cofor.us

www.cofor.us